

Metric Forrest STUDIO

1146 East Washington Ave

Madison, WI 53704

608-255-9080

IMAGINE

Metricforreststudio.com
2020 Catalog



Free Display with

\$1500 Order

Includes 162 pairs



Free Display with

\$1000 Order

Includes 111 pairs



I721
Ivy (New)

\$7.00

Antique Brass earwire.
Copper etched and fired
charm. Colors vary. Length: 2
1/4"



I722
Tri Metal

\$7.00

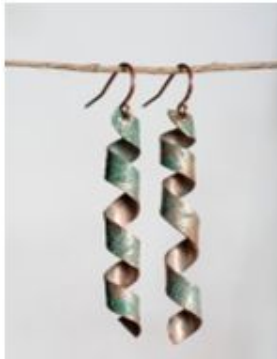
Gold, silver, gunmetal jump
rings, reclaimed aluminum
wire. Surgical-steel earwire.
Length: 2"



I723
Ribbons

\$7.00

Hammered brass and etched
copper pendant. Gold-plated
earwire.
Length: 2 1/2 "



I724
Crazy Straw

\$7.00

Etched and patinated copper
pendant. Brass earwire.
Length: 2"



I730
Mint Chip

\$7.00

Silver-plated earwire,
gemstone beads, pewter
charm. Colors vary.
Length: 2"



I731
Sticky Toffee Pudding

\$7.00

Surgical steel kidney earwire.
Silver-plated antiqued 9 3/4
charms.
Length: 1 3/4"



I732
Poppy (New)

\$7.00

Silver-plated post earwire
with nickel oval charm.
Length: 1"



I733
Rosebud (New)

\$7.00

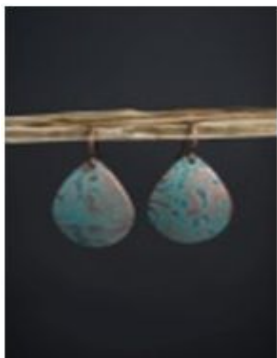
Silver or gold-plated earwire
with glass beads. Colors
vary. Length: 1"



I734
Clover (New)

\$7.00

Gold-plated hoop earwire
with assorted gemstone
chips. Colors vary.
Length: 1"



I815
Spooner

\$8.00

Antiqued copper earwire.
Etched and patinated copper
teardrop charm.
Length: 1"



I818
Olivia

\$8.00

Gold-plated earwire.
Studio etched brass circle,
glass faceted teardrop.
Colors vary.
Length: 1 1/2"



I819
Mae

\$8.00

Copper earwire and headpin.
Studio etched and patinated
copper disc. Pearl bead
teardrop. Colors vary.
Length: 1 1/2"



I820
Patron Gold

\$8.00

Gold-plated earwire. Hand
hammered brass teardrop.
Length: 1 1/4"



I823
Pistachio

\$8.00

Silver-plated earwire. Studio
etched nickel triangle studio
inked patina. Colors vary.
Length 1 1/2"



I824
Cookies and Cream

\$8.00

Silver-plated earwire and
components. Studio
hammered nickel and resin
charms. Colors vary.
Length: 1 3/4"



I825
Aster (New)

\$8.00

Rose gold earwire with
etched and colored copper.
Length: 2"



I826
Juniper (New)

\$8.00

Antique brass earwire with
hammered brass charms.
Lava rock bead. Colors vary.
Length: 1 1/2"



I827
Lilac (New)

\$8.00

Silver plated earwire with
etched nickel charm. Inked
patina. Colors vary. Length: 1
1/2"



I828
Verbena (New)

\$8.00

Gold-plated kidney earwire
with textured bronze.
Gemstone beads. Colors
vary. Length: 2 1/4"



I829
Orchid (New)

\$8.00

Silver-plated earwire with
gemstone beads. Colors
vary. Length: 1.5"



I925
Ava

\$9.00

Silver-plated earwire. Nickel
etched teardrop, resin
charm. Colors vary.
Length: 2"



I926
Dakota

\$9.00

Copper kidney earwire.
Etched nickel teardrop,
hammered brass teardrop.
Length: 1 1/4"



I928
Rose Hoop

\$9.00

Gold-plated earwire. Rose
gold-plated hoop.
Length: 2"



I930
Equinox

\$9.00

Brass earwire. Oxidized
brass leaf charm with brass
chain. Various gemstone
beads. Colors vary.
Length 3"



I931
Bronze Age

\$9.00

Antique copper earwire and component. Brass charm with etched and patinated copper charm. Glass bead accent. Colors vary. Length: 1 1/4"



I932
Loopie

\$9.00

Gold-plated earwire. Curved copper strip with gold ring. Length: 1 1/2"



I933
Mimosa Sunrise

\$9.00

Silver-plated earwire and headpins. Etched and patinated copper. gemstone chips. Colors vary. Length: 2 1/4"



I935
Tiramisu

\$9.00

Silver-plated earwire. Textured nickel charm. Length: 1 3/4"



I1024
Birch

\$10.00

Antiqued long brass earwire. Birch teardrop, etched and patinated copper teardrop. Length: 2"



I1025

Natalie

\$10.00

Antique brass earwire. Enameled copper rectangle, antique brass headpin, glass round bead. Colors vary. Length: 1 3/4"



I1030
Sturgeon Bay

\$10.00

Gold-plated earwire. Etched and patinated copper disc and tag, hammered brass strip. Length: 1 3/4"



I1031
Moose Tracks

\$10.00

Silver-plated earwire. Enameled copper charm. Colors vary. Length: 1 3/4"



I1032
Cherry Garcia

\$10.00

Gold-plated hoop earwire. Brass charms. Length: 1 1/4"



I1033
Cookie Dough

\$10.00

Silver-plated earwire & components. Textured nickel & copper studio enameled charms. Colors vary. Length: 1 1/2"



I1035
Salted Carmel

\$10.00

Silver-plated earwire. Brass and gunmetal charms. Shapes vary. Length: 1 1/2"



I1036
Hazel(New)

\$10.00

Gold-plated hoop earwire with resin and wood charms. Colors vary. Length: 1 3/4"



I1130
Petal

\$11.00

Etched and oxidized copper petal-shaped pendant. Antique-copper component and earwire. Length: 2"



I1131
Nutty Squirrel

\$11.00

Gold-plated earwire. Etched and patinated copper spoon with gold-plated pinecone charm. Length: 1 1/4"



I1133
Chunky Monkey

\$11.00

Niobium earwire. Resin patterned charm. Shapes and colors vary. Length: 2 1/2"



I1134
Half Baked

\$11.00

Brass earwire. Resin and wood charm. Colors vary. Length: 2 1/2"



I1135
Blue Bell(New)

\$11.00

Silver-plated earwire with silver filled wire. Faceted glass beads. Colors vary. Length: 1 3/4"



I1136
Daisy(New)

\$11.00

Antique brass earwire with wood charm Length: 2 1/2"



I1137
Jasmine(New)

\$11.00

Antiqued brass earwire with textured and solid brass. Length: 2 1/2"



I1201
Coto

\$12.00

Silver-plated earwire. Silver-plated jumpings with glass rings. Colors vary. Length: 1 3/4"



I1202
Blake

\$12.00

Silver-plated earwire and headpin. Nickel silver strip. Studio enameled copper strip. Colors vary. Length 2"



I1208
Neapolitan

\$12.00

Silver-plated earwire. Handmade nickel silver, brass and studio etched copper charms. Length: 2 1/2"



I1209
Butter Pecan

\$12.00

Surgical steel earwire. Embossed and antiqued silver-plated fern charm. Colors vary. Length: 2 1/2"



I1222
Mosinee

\$12.00

Antiqued brass long earwire. Gold dipped manufactured feather. Color varies. Length 2"



I1224
Lotus (New)

\$12.00

Antique brass earwire with etched and flame painted copper. Colors vary. Length: 2 1/4"



I1225
Dahlia (New)

\$12.00

Silver filled, hammered and shaped wire. Length: 1 1/2"



I1226
Sorrel (New)

\$12.00

Silver-plated earwire with gunmetal and silver beads on leather cord. Length: 2 1/4"

Metric Forrest
STUDIO

1146 East Washington Ave

Madison, WI 53704

608-255-9080

IMAGINE

Metricforreststudio.com
2020 Catalog